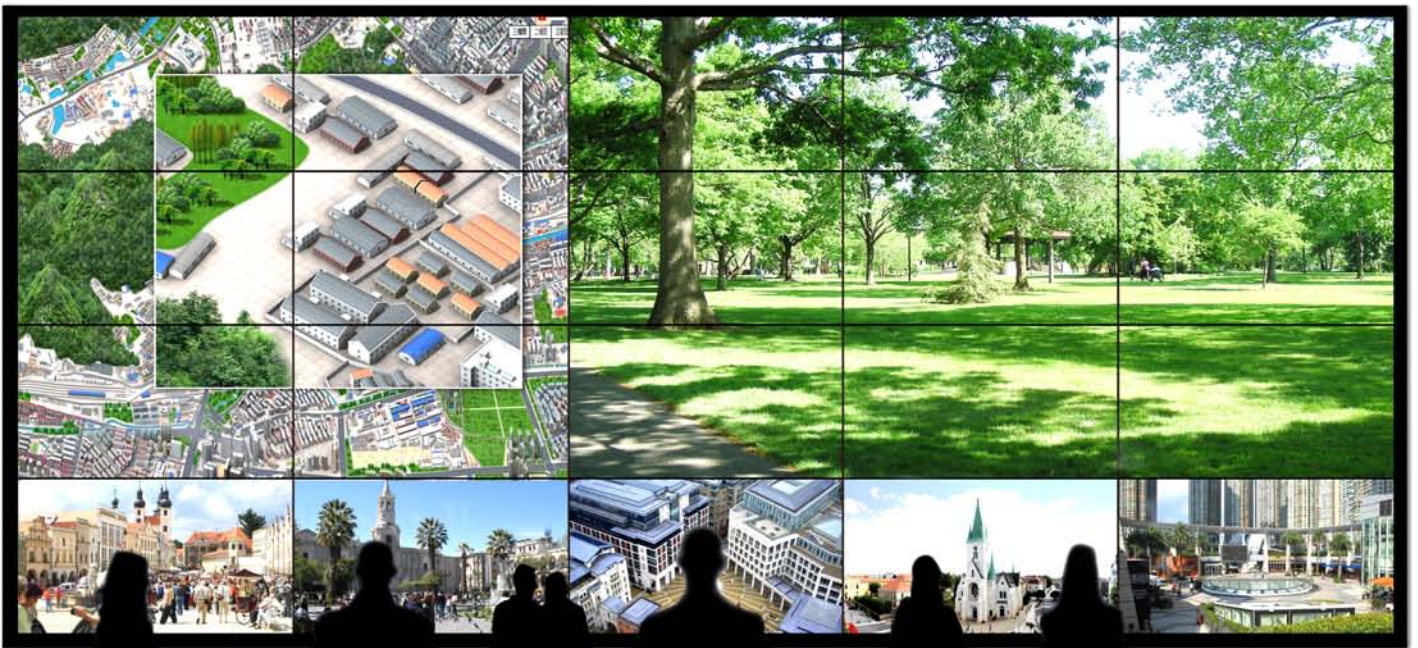


# Dahua Video Wall & Display Solution



# Company Overview



Dahua Technology is a world-leading and advanced video surveillance solution provider. The company's product portfolios include the advanced series of front-end, back-end, display, software as well as intelligent traffic solution. Dahua was the first company in China to launch 8-channel real-time embedded digital video recorder in 2001. Since then, the company keeps on investing and building strong R&D capabilities for new technology and innovation. With nearly investing 10% of sales revenue every year, Dahua has a more than 2000 professionals in R&D team, aiming to provide the cutting edge products with high quality and performance. To create win-win situation and to maximize customers' values are always our priorities.

Dahua has established sales, marketing and service network locally and globally. Besides offices in mainland China, the company also has offices or sales representatives in Asia, the Americas, Europe, Oceania, Africa and others, responding to the market with the best service and products. Meanwhile, Dahua provides the industry leading "three-year" warranty in

China's market. To-date, Dahua's products are widely applied in many fields, such as banking, public security, energy, telecommunication, intelligent-building and intelligent-transportation. Numerous major projects have been installed with Dahua's solutions, for example, the Three Gorges Hydropower Plant, Six-Country Summit, Olympic Venues, Shanghai World Expo, Kremlin Palace, Paris Charles de Gaulle Airport and London Underground as well as many others.

Dahua Technology owns 353 patents, including 16 invention patents. In China, Dahua Technology is a Safety City project recommended brand and one of China's most influential security companies. At international front, the company has been awarded "Top 10 Security Brand in China" for 10 years and has been ranking in "Security 50" by a&s magazine for 6 years. Moreover, Dahua enjoyed 6th largest market share according to 2012 IMS global report.

# Index

---



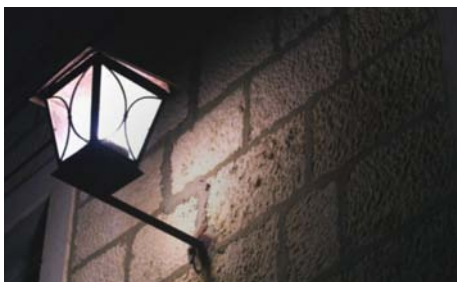
<b>Features</b> .....	05-06
<b>Solution</b> .....	07-09
<b>LCD Display Unit</b> .....	10
DHL460UTS-E/DHL460UT-E .....	11
DHL550UTS-E/DHL550UT-E .....	12
DHL22 .....	13
DHL27 .....	14
DHL32 .....	15
DHL39 .....	16
DHL46 .....	17
<b>Multi-Screen Controller</b> .....	18
DSCON2000 .....	19
M30 .....	20
M60 .....	21
<b>Success Cases</b> .....	22

# Features

## 1. High Brightness

General TV, computer monitor and etc. have brightness of 250~300cd/m<sup>2</sup>; while Dahua LCD splicing video wall has brightness of 450~800cd/m<sup>2</sup>. High brightness guarantees quality of display, and better reflects the actual image quality of the source.

450~800cd/ m<sup>2</sup>



Other's



Dahua

## 2. High Contrast

Dahua LCD splicing video wall's contrast is 3500:1. High contrast may effectively display the layers of image, thus user can catch every detail in image.

3500:1



Other's

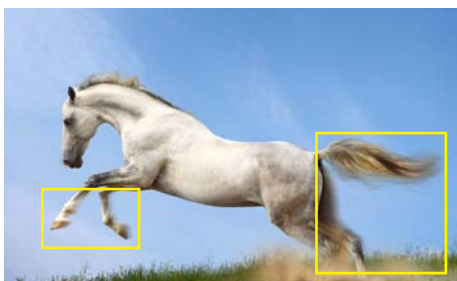


Dahua

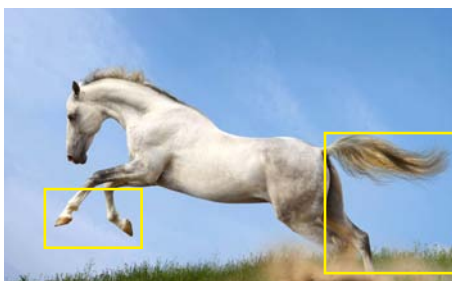
## 3. Fast Response

Real 8ms response time. It effectively reduces low motion blur and makes image more fluent, as designed for high-speed motion display.

8ms



Other's



Dahua

# Features

## 4. Super-wide Viewing Angle



Horizontal and vertical viewing angle reach 178° which means user can view from any angle and still enjoys the great visual effect. Excellent performance of display contributes to the fantastic display effect of splicing video wall and the effect remains consistent even user view from different viewing angles.

178°



Other's

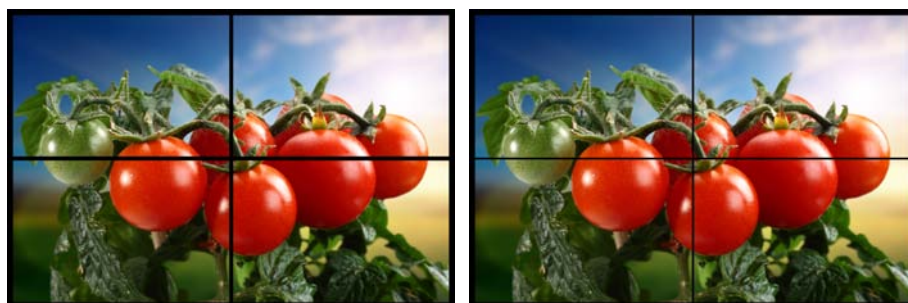
Dahua

## 5. Super-Narrow Edge



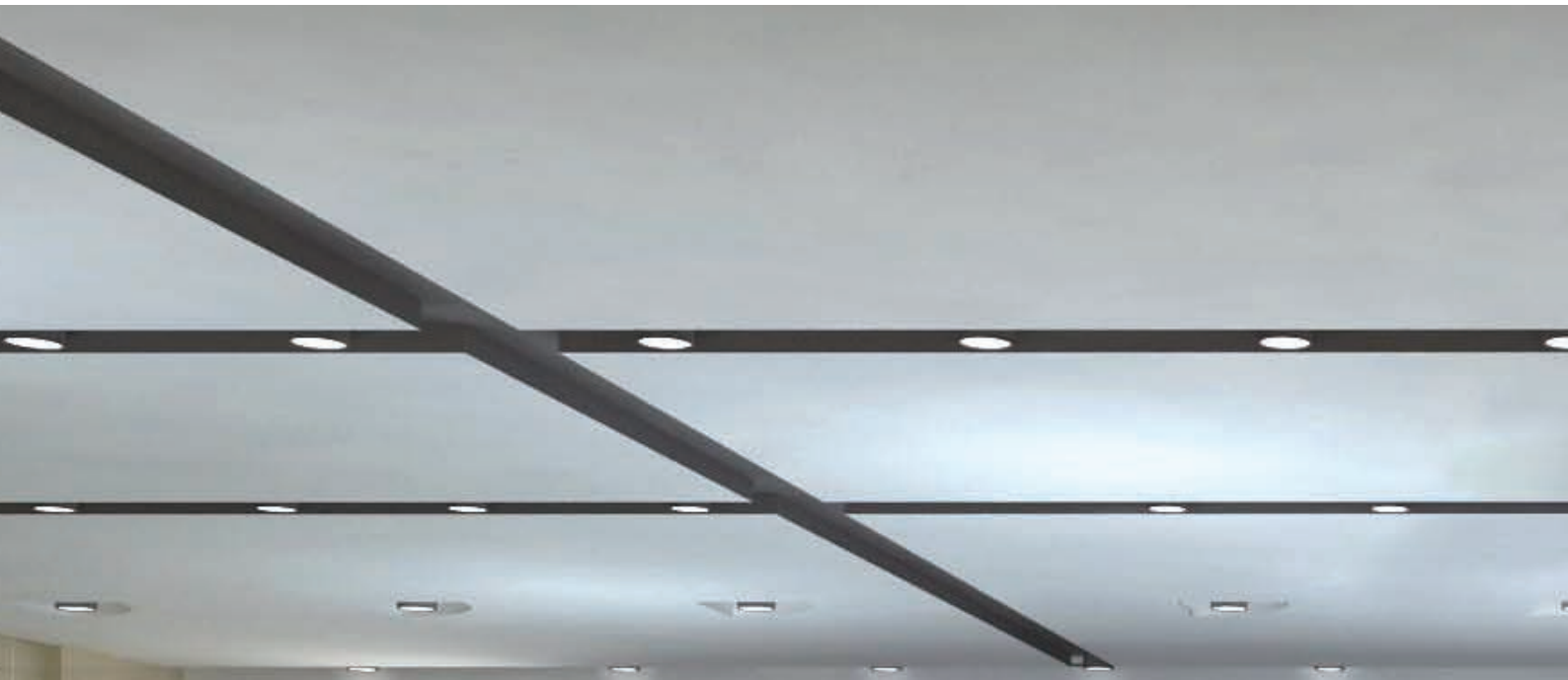
Dahua LCD splicing video wall, currently adopts Samsung super-narrow LCD panel with dual seam of 5.7mm which provides more professional monitoring effect.

5.7mm



Other's

Dahua







# Solution





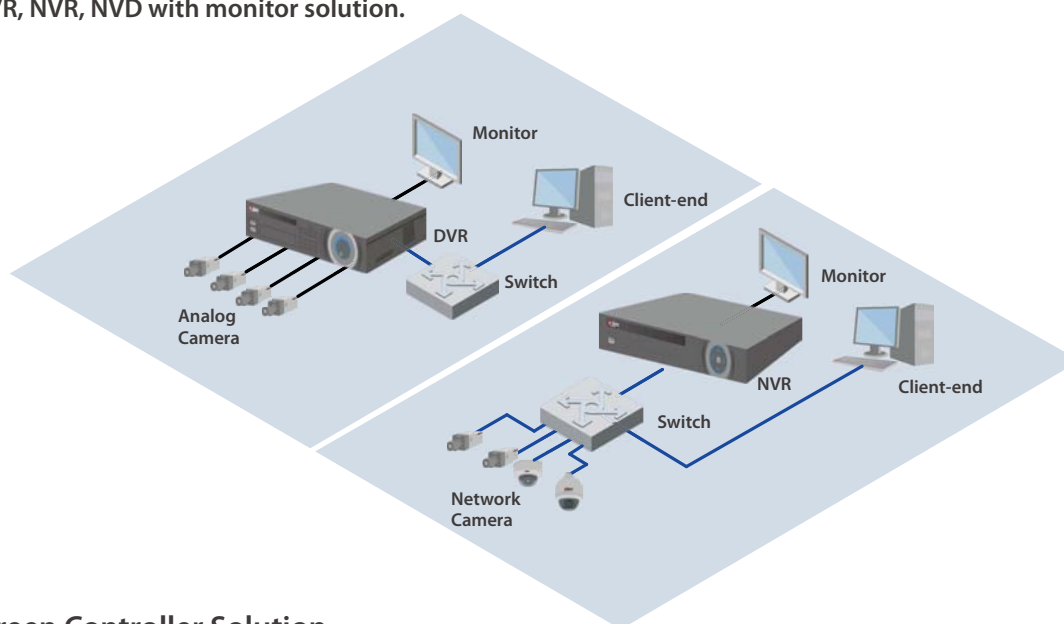
# Solution

## Summary

Dahua provides a complete set of video wall display solution. Our multi-screen controller has advanced splicing function, strong decoding ability, abundant input ports (CVBS, VGA, DVI, SDI, HDMI, HDCVI and etc. ) which satisfy the need of SD/HD, digital/analog random display combination in surveillance system. Furthermore, multi-screen controller supports local, Web-end, network keyboard and other operation methods. It provides user with a user-friendly interface and swap design, thus making the system more strong, stable and easy to maintain. Multi-screen controller and our HD, high-brightness, high-contrast LCD splicing unit, compose a complete video wall system.

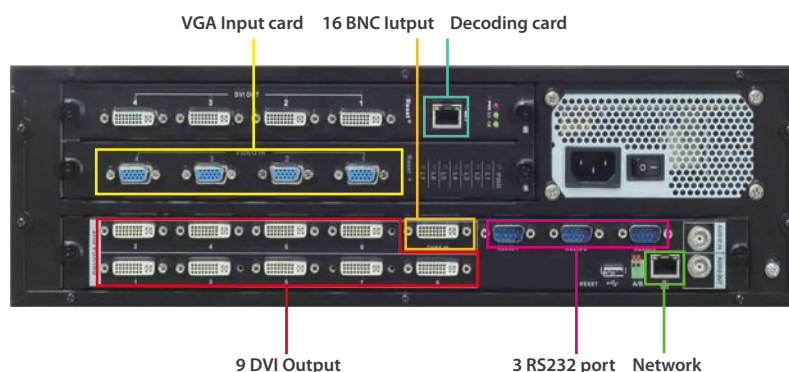
## Solution

### 1. Traditional DVR, NVR, NVD with monitor solution.



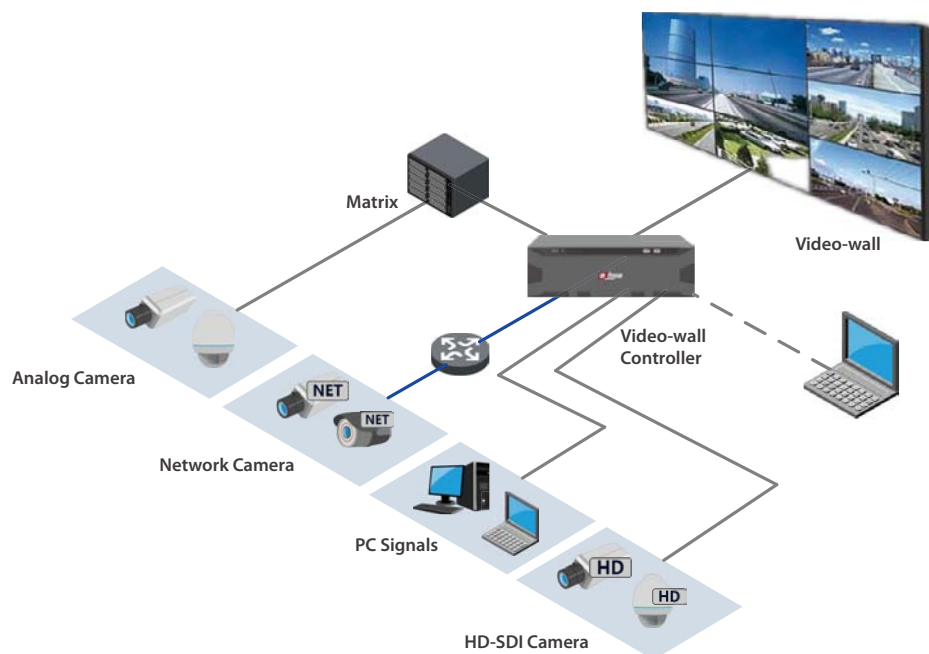
### 2. Multi-Screen Controller Solution

- Analog, digital, and network signal input and output switch.
- Built-in decoding function.
- Full screen, splicing, roaming and etc.
- B/S structure, without software operation.



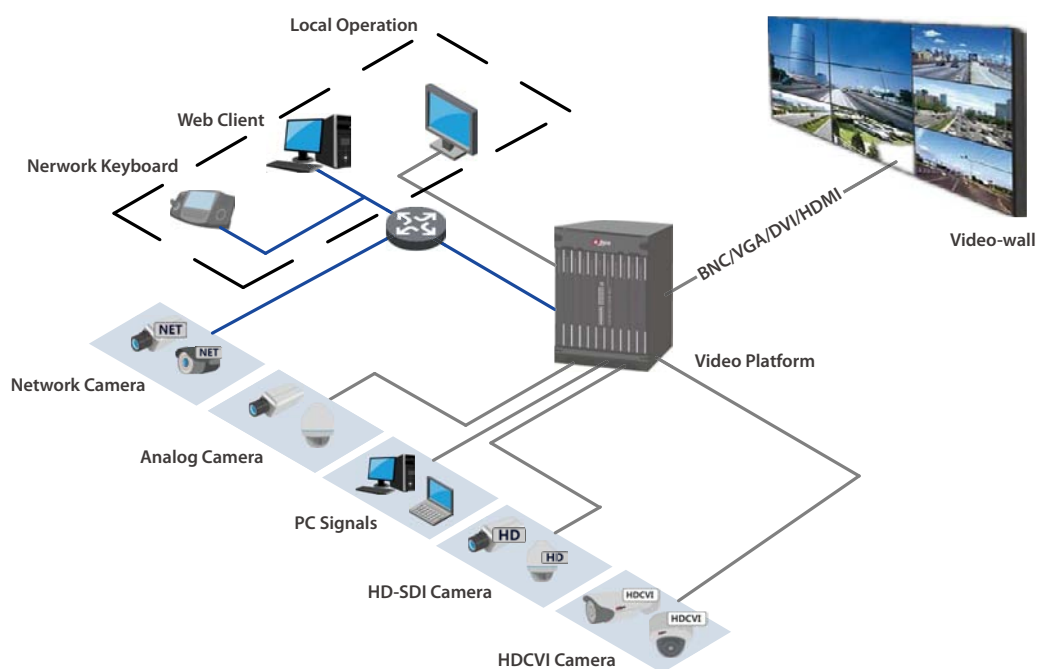
Dahua Multi-Screen Controller Port (i.e. M30)

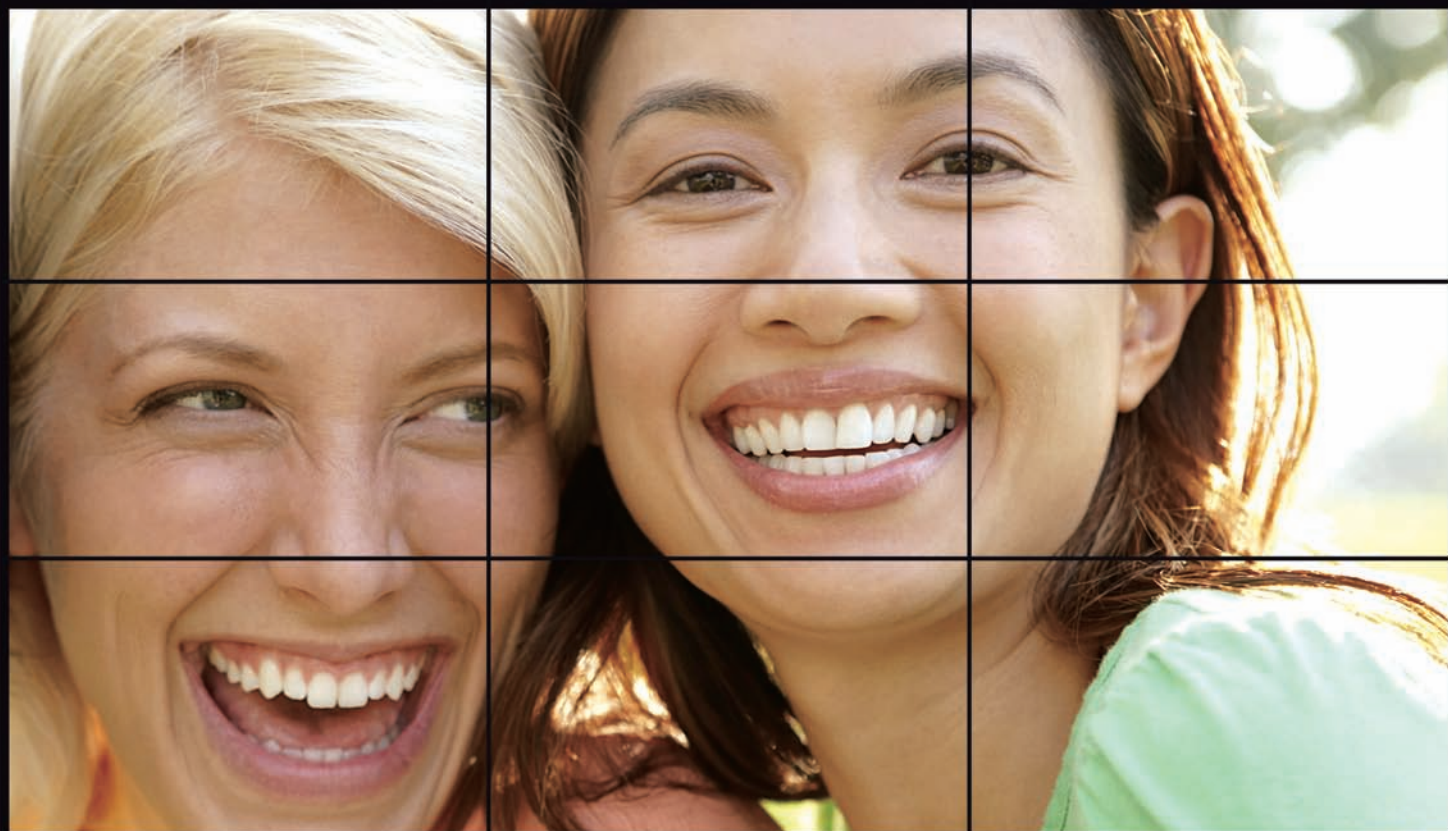
# Solution



### 3. Video Matrix Platform Solution

- CVBS, HD-SDI, DVI, HDCVI, and network signal input and output switch.
- Local operation, Web client, network keyboard and etc.
- High performance decoding ability, standalone device support 1280ch@D1 or 320ch@1080P decoding.
- Local video signal support non-compression output to video wall.
- BNC, VGA, DVI, HDMI and other signal output.
- Full screen, splicing, roaming and other display functions.





# LED Display Unit & Monitors



# DHL460UTS-E/DHL460UT-E

## 46" Full-HD LCD Display Unit



### Introduction

With the guidance of system integration and automation control theory, Dahua ultra-narrow splicing video wall display system incorporates the most advanced industrial level high-definition LCD technology, multi-screen splicing technology, image processing technology, network technology, etc. together. This makes the entire system a high-brightness, high resolution, intelligent control and easy-to-operate video-wall display system. This video-wall system can easily work with the video surveillance system, the dispatching system, and the network system to make an interactive information platform. The design of the entire system's hardware and software fully takes the security, reliability, ease of maintenance and scalability into account. In addition to widely used in monitoring dispatching, the excellent design and flexible installation can also meet the public display, advertising and other commercial needs

### Features

- Industrial level DID LCD panel, suitable for 7×24 continuous works
- Ultra-narrow side LCD patchwork
- High contrast and high brightness greatly enhance the video layering, and present the details of the video
- High fidelity digital processing, brilliant and vivid video
- Abundant interfaces, support video loop
- Infrared, RS232 double mode, supporting remote PC control

### Technical Specifications

Model	DHL460UTS-E	DHL460UT-E
<b>System</b>		
Diagonal	46"(16:9)	
Type	S-PVA(FHD)	
Resolution	1920×1080	
Dot Pitch	0.53025(H)×0.53025(V)	
Physical seam	5.7mm (Upper left:3.8 Lower right:1.9)	
Optical seam	5.9mm	
Backlight	LED	
Brightness(Standard)	500 cd/m <sup>2</sup>	700 cd/m <sup>2</sup>
Contract	3500:1	
Angle of view	178/178	
Response Time(Grey Scale)	8ms	
Gamut(CIE1931)	72%	
Display Color	16.7M/8bit	
Saturation	92%	
<b>Video &amp; Audio</b>		
Video Input	CVBS(BNC)×2	
PC Signal	VGA(D-Sub)×1	
Net Video Decode Signal(Optional)	RJ45, High definition H.264 video decoding signal	
Digital Signal	DVI×1 [1080P(1920×1080), downward compatible] HDMI×1 [1080P(1920×1080), downward compatible]	
Audio Input	N/A	
Audio Output	N/A	
Loop Out	CVBS(BNC)×2	
<b>General</b>		
Consumption (Standard)	133W	200W
Consumption (Standby)	≤1W	
Power Supply	AC100-240V~(+/-10%), 50/60 Hz	
Installation Mode (all optional)	Modular Stacking/ Cabinet installation (Back up)	
Cooling System	Industrial Cooling Fan	
Control Mode	RS232 serial control, all way loop, infrared remote control	
Frame Color	Black	
Case Material	Metal	
Weight	22.5kg	
Unit Dimension(mm)	1024×579×245	
Display Area(mm)	1018×573	
Package Dimension (mm)	1180×280×740	
MTBF	50,000 hours	
Work Environment	Temperature: 0 C ~50 C	
	Humidity: 20%~95%	
	Altitude: 0-23000ft	
Storage Environment	Temperature: -25 C ~70 C	
	Humidity: 60%~75%	
	Altitude: 0-43000ft	
Features	Double-sided physical seam 5.7mm	
	Build-in industrial level fan	
	High and low current are installed respectively	
	Infrared remote control	
	Remote PC centralized control	

# DHL550UTS-E/DHL550UT-E

## 55" Full-HD LCD Display Unit



### Introduction

With the guidance of system integration and automation control theory, Dahua ultra-narrow splicing video wall display system incorporates the most advanced industrial level high-definition LCD technology, multi-screen splicing technology, image processing technology, network technology, etc. together. This makes the entire system a high-brightness, high resolution, intelligent control and easy-to-operate video-wall display system. This video-wall system can easily work with the video surveillance system, the dispatching system, and the network system to make an interactive information platform. The design of the entire system's hardware and software fully takes the security, reliability, ease of maintenance and scalability into account. In addition to widely used in monitoring dispatching, the excellent design and flexible installation can also meet the public display, advertising and other commercial needs

### Features

- Industrial level DID LCD panel, suitable for 7×24 continuous works
- Ultra-narrow side LCD patchwork
- High contrast and high brightness greatly enhance the video layering, and present the details of the video.
- High fidelity digital processing, brilliant and vivid video
- Abundant interfaces, support video loop
- Infrared, RS232 double mode, supporting remote PC control

### Technical Specifications

Model	DHL550UTS-E	DHL550UT-E
<b>System</b>		
Diagonal	55"(16:9)	
Type	S-PVA(FHD)	
Resolution	1920×1080	
Dot Pitch	0.63(H)×0.63(V)	
Physical seam	5.7mm (Upper left:3.8 Lower right:1.9)	
Optical seam	5.9mm	
Backlight	LED	
Brightness(Standard)	450 cd/m <sup>2</sup>	700 cd/m <sup>2</sup>
Contract	3500:1	
Angle of view	178/178	
Response Time(Grey Scale)	8ms	
Gamut(CIE1931)	69%	
Display Color	16.7M/8bit	
Saturation	92%	
<b>Video &amp; Audio</b>		
Video Input	CVBS(BNC)×2	
PC Signal	VGA(D-Sub)×1	
Net Video Decode Signal(Optional)	N/A	
Digital Signal	DVI×1 [1080P(1920×1080), downward compatible] HDMI×1 [1080P(1920×1080), downward compatible]	
Audio Input	N/A	
Audio Output	N/A	
Loop Out	CVBS(BNC)×2	
<b>General</b>		
Consumption (Standard)	240W	
Consumption (Standby)	≤1W	
Power Supply	AC100-240V~(+/-10%), 50/60 Hz	
Installation Mode (all optional)	Modular Stacking/ Cabinet installation (Back up)	
Cooling System	Industrial Cooling Fan	
Control Mode	RS232 serial control, all way loop, infrared remote control	
Frame Color	Black	
Case Material	Metal	
Weight	46kg	
Unit Dimension(mm)	1215.3×686.1×245	
Display Area(mm)	1209.6×680.4	
Package Dimension (mm)	1335×900×460	
MTBF	50,000 hours	
Work Environment	Temperature: 0℃~50℃ Humidity: 20%~95% Altitude: 0-23000ft	
Storage Environment	Temperature: -25℃~70℃ Humidity: 60%~75% Altitude: 0-43000ft	
Features	Double-sided physical seam 5.7mm Build-in industrial level fan High and low current are installed respectively Infrared remote control Remote PC centralized control	

# DHL22

## 22" Full-HD LCD Monitor



### Features

- Industrial Level DID LCD panel, greatly enhance the video layer, and present the details of the video
- 5.8 ms response time, no tail in the picture
- Using the latest 3D image digital processing circuit, clear image, wide perspective
- Black level extension self-adapting function to enhance the image depth layering
- Auto Motion-blur elimination to extend LCD lifespan
- Multiple video source input
- Remote control, button, software triple control, support for remote startup or shutdown
- Support Point-to-Point remote control, solve the multiple large-screen video wall control perfectly
- Plastic shell mold design, beautiful light
- Built-in high performance power supply with low power consumption
- Support external power supply

### Technical Specifications

Model	DHL22
<b>System</b>	
Diagonal	22"(16:9)
Type	TFT-LCD(HD)
Backlight	LED
Resolution	1920×1080
Dot Pitch	0.248(H)×0.248(V)
Luminance(Standard)	250cd/m <sup>2</sup>
Contract	1000:1
Dynamic Contrast Ratio	N/A
Angle of view	178/178
Response Time(Grey Scale)	5.8ms
Gamut(CIE1931)	TBD
Display Color	16.7M/8bit
Saturation	92%
<b>Video &amp; Audio</b>	
Video Input	CVBS(BNC)×2 S-video×1
Video Output	CVBS(BNC)×1
PC Signal	VGA(D-Sub)×1
Digital Signal	HDMI×1(1920×1080), downward compatible
Audio Input	Audio Input×1(optional)
Audio Output	Audio Output×1(optional)
Loop Out	N/A
<b>General</b>	
Consumption (Standard)	30W
Consumption (Maximum)	40W
Consumption (Standby)	≤1W
Power Supply	AC100-240V~(+/-10%), 50/60 Hz
Control Mode	Infrared remote control, Button control
Bezel Color	Black
Gross Weight	13.4kg
Unit Dimensions(mm)	546.0×60.0×360.0(Base excluded)
Active Screen area(mm)	476.64×268.11
Package Dimensions(mm)	630×220×490
Frame Depth (mm)	40.0
Enclosure material	Plastic
Installation Mode (all optional)	Base*/Wall-mounted*/TV-Wall*
Protective Glass/ Touch Screen	Optional
Working Temperature	0℃ ~50℃
Working Humidity	50%~80%
Stock Temperature	-20℃ ~60℃
Average Lifespan	50,000 hours
Features	Built-in industrial fan
	Built-in stereo speakers
	Spare DC 12V
	Control: Panel Keys / IR remote control

Note: \*means optional fitting, remote control is optional

# DHL27

## 27" Full-HD LCD Monitor



### Features

- Industrial Level DID LCD panel, suitable for 7×24 continuous works
- High contrast and high brightness greatly enhance the video layer, and present the details of the video
- High fidelity digital, brilliant and vivid video
- Build-in 3D COMB filter and 3D Noise Reduction
- Auto Motion-blur elimination to extend LCD lifespan
- Abundant interfaces, support video loop
- Remote control, software dual control, support remote PC centralized control
- Support Point-to-Point remote control, solve the multiple large-screen video wall control perfectly
- Intelligent brightness control, energy saving
- Using Tamper-proof metal housing, no radiation
- Professional thermal design to extend equipment lifespan
- Built-in power, low energy consumption, ultra-quiet

### Technical Specifications

Model	DHL27
<b>System</b>	
Diagonal	27"(16:9)
Type	TFT(FHD)
Backlight	LED
Resolution	1920×1080
Dot Pitch	0.31125(H)×0.31125(V)
Luminance(Standard)	300cd/m <sup>2</sup>
Contract	3000:1
Angle of view	178°/178°
Response Time(Grey Scale)	12ms
Gamut(CIE1931)	80%
Display Color	16.7M/8bit
<b>Video &amp; Audio</b>	
Video Input	CVBS(BNC)×2
PC Signal	VGA(D-Sub)×1
Digital Signal	DVI-D×1 [1080P(1920×1080), downward compatible] HDMI×1 [1080P(1920×1080), downward compatible]
Audio Input	Optional
Audio Output	—
Loop Out	CVBS(BNC)×2
<b>General</b>	
Power Consumption	≤70W (45W typically)
Power Supply	AC100-240V~(+/-10%),50/60 Hz
Control Mode	RS232 Serial control, all way loop, infrared remote control
Gross Weight	13.4kg
Unit Dimensions(mm)	657.0×405.0×58.7
Active Screen area(mm)	575.77×323.71
Package Dimensions(mm)	690×480×256
Frame Depth (mm)	40.0
Protective Glass/ Touch Screen	Optional
Working Temperature	0 C ~50 C
Working Humidity	20%~90%
Stock Temperature	-20 C ~60 C
Average Lifespan	50, 000 hours

# DHL32

## 32" Full-HD LCD Monitor



### Features

- Industrial Level DID LCD panel, suitable for 7×24 continuous works
- High contrast and high brightness greatly enhance the video layer, and present the details of the video
- High fidelity digital, brilliant and vivid video
- Build-in 3D COMB filter and 3D Noise Reduction
- Auto Motion-blur elimination to extend LCD lifespan
- Abundant interfaces, support video loop
- Remote control, software dual control, support remote PC centralized control
- Support Point-to-Point remote control, solve the multiple large-screen video wall control perfectly
- Intelligent brightness control, energy saving
- Using Tamper-proof metal housing, no radiation
- Professional thermal design to extend equipment lifespan
- Built-in power, low energy consumption, ultra-quiet

### Technical Specifications

Model	DHL32
<b>System</b>	
Diagonal	32"(16:9)
Type	S-PVA(HD)
Backlight	CCFL
Resolution	1366×768
Dot Pitch	0.51075(H)×0.51075(V)
Luminance(Standard)	450 cd/m <sup>2</sup>
Contract	3000:1
Dynamic Contrast Ratio	N/A
Angle of view	178/178
Response Time(Grey Scale)	8ms
Gamut(CIE1931)	72%
Display Color	16.7M/8bit
Saturation	92%
<b>Video &amp; Audio</b>	
Video Input	CVBS(BNC)×2
PC Signal	VGA(D-Sub)×1
Digital Signal	DVI×1[1080P(1920×1080), downward compatible] HDMI×1[1080P(1920×1080), downward compatible]
Audio Input	N/A
Audio Output	N/A
Loop Out	CVBS(BNC)×2
<b>General</b>	
Consumption (Standard)	50W
Consumption (Maximum)	80W
Consumption (Standby)	≤1W
Power Supply	AC100-240V~(+/-10%),50/60 Hz
Control Mode	RS232 Serial control, all way loop, infrared remote control
Bezel Color	Black
Gross Weight	17.6kg
Unit Dimensions(mm)	789.0×484.0×58.2
Active Screen area(mm)	697.68×392.26
Package Dimensions(mm)	890×590×256
Frame Depth (mm)	45.0
Enclosure material	Metal
Installation Mode (all optional)	Base*/Wall-mounted*/TV-Wall*/Ceiling*
Protective Glass/ Touch Screen	Optional
Working Temperature	0 C ~50 C
Working Humidity	20%~90%
Stock Temperature	-20 C ~60 C
Average Lifespan	50, 000 hours
Features	Built-in industrial fan PIP display infrared remote control Thin aluminum Remote PC centralized control

Note : \*means ptional fitting



# DHL39

## 39" Full-HD LCD Monitor



### Features

- Industrial Level DID LCD panel, suitable for 7×24 continuous works
- High contrast and high brightness greatly enhance the video layer, and present the details of the video
- FHD 1920×1080 resolution, brilliant and vivid video
- Build-in 3D COMB filter and 3D Noise Reduction
- Auto Motion-blur elimination to extend LCD lifespan
- Abundant interfaces, support video loop
- Remote control, software dual control, support remote PC centralized control
- Support Point-to-Point remote control, solve the multiple large-screen video wall control perfectly
- Intelligent brightness control, energy saving
- Using Tamper-proof metal housing, no radiation
- Professional thermal design to extend equipment lifespan
- Built-in power, low energy consumption, ultra-quiet

### Technical Specifications

Model	DHL39
<b>System</b>	
Diagonal	39"(16:9)
Type	TFT(FHD)
Backlight	LED
Resolution	1920×1080
Dot Pitch	0.14825(H)×0.14825(V)
Luminance(Standard)	350cd/m <sup>2</sup>
Contract	3500:1
Angle of view	176°/176°
Response Time(Grey Scale)	9.5ms
Gamut(CIE1931)	68%
Display Color	16.7M/8bit
<b>Video &amp; Audio</b>	
Video Input	CVBS(BNC)×2
PC Signal	VGA(D-Sub)×1
Digital Signal	DVI×1 [1080P(1920×1080), downward compatible] HDMI×1 [1080P(1920×1080), downward compatible]
Audio Input	Optional
Audio Output	—
Loop Out	CVBS(BNC)×2
<b>General</b>	
Power Consumption	≤150W (120W typically)
Power Supply	AC100-240V~(+/-10%),50/60 Hz
Control Mode	RS232 Serial control, all way loop, infrared remote control
Gross Weight	28.7kg
Unit Dimensions(mm)	978.0×589.0×62.7
Active Screen area(mm)	885.60×498.15
Protective Glass/Touch Screen	Optional
Working Temperature	0 C ~50 C
Working Humidity	20%~90%
Stock Temperature	-20 C ~60 C
Average Lifespan	50,000 hours

# DHL46

## 46" Full-HD LCD Monitor



### Features

- Industrial Level DID LCD panel, suitable for 7×24 continuous works
- High contrast and high brightness greatly enhance the video layer, and present the details of the video
- High fidelity digital, brilliant and vivid video
- Build-in 3D COMB filter and 3D Noise Reduction
- Auto Motion-blur elimination to extend LCD lifespan
- Abundant interfaces, support video loop
- Remote control, software dual control, support remote PC centralized control
- Support Point-to-Point remote control, solve the multiple large-screen video wall control perfectly
- Intelligent brightness control, energy saving
- Using Tamper-proof metal housing, no radiation
- Professional thermal design to extend equipment lifespan
- Built-in power, low energy consumption, ultra-quiet

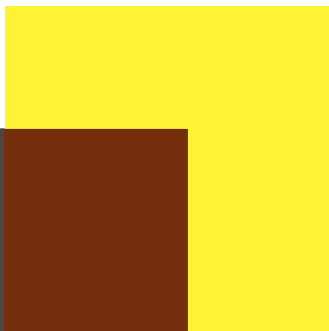
### Technical Specifications

Model	DHL46
<b>System</b>	
Diagonal	46"(16:9)
Type	S-PVA(HD)
Backlight	CCFL
Resolution	1920×1080
Dot Pitch	0.53025(H)×0.53025(V)
Luminance(Standard)	450 cd/m <sup>2</sup>
Contract	3000:1
Dynamic Contrast Ratio	N/A
Angle of view	178/178
Response Time(Grey Scale)	8ms
Gamut(CIE1931)	72%
Display Color	16.7M/8bit
Saturation	92%
<b>Video &amp; Audio</b>	
Video Input	CVBS(BNC)×2
PC Signal	VGA(D-Sub)×1
Digital Signal	DVI×1[1080P(1920×1080), downward compatible] HDMI×1[1080P(1920×1080), downward compatible]
Audio Input	N/A
Audio Output	N/A
Loop Out	CVBS(BNC)×2
<b>General</b>	
Consumption (Standard)	150W
Consumption (Maximum)	180W
Consumption (Standby)	≤1W
Power Supply	AC100-240V~(+/-10%),50/60 Hz
Control Mode	RS232 Serial control, all way loop, infrared remote control
Bezel Color	Black
Gross Weight	30.6kg
Unit Dimensions(mm)	1110.0×664.0×64.7
Active Screen area(mm)	1018.08×572.67
Package Dimensions(mm)	1115×753×310
Frame Depth (mm)	45.0
Enclosure material	Metal
Installation Mode (all optional)	Base*/Wall-mounted*/TV-Wall*/Ceiling*
Protective Glass/ Touch Screen	Optional
Working Temperature	0 C ~50 C
Working Humidity	20%~90%
Stock Temperature	-20 C ~60 C
Average Lifespan	50,000 hours
Features	Built-in industrial fan PIP display Infrared remote control Thin aluminum Remote PC centralized control

Note: \*means optional fitting, remote control is optional



# Multi-Screen Controller



# DH-DSCON2000

## Video Wall Controller



### Features

#### Hardware Structure

- 6U 19" Standard industry box
- Card-Pluggable module design, easily configured according to demands
- Hot-swappable function cards, easy for maintenance
- Redundant power supply, high reliability

#### Video Output

- 16ch@DVI/VGA HD signal, support split, splice, roam, etc.

#### Matrix Switch

- Support analog & digital video input and matrix output
- Support matrix switching and output for SD & HD video
- Lossless switching with time delay less than 40ms
- Multiple control modes : network keyboard, web client & iPad

#### Network & Control

- Support 10M/100M/1000M for video-wall control
- Support control for matrix, video-wall, dome camera with RS485 & RS232, support mainstream manufacturers' protocol
- Support user authority management

### Technical Specifications

Model		DH-DSCON2000
<b>System</b>		
Main Processor	32-bit embedded processor, incorporates hardware video processing accelerating unit	
Operating System	Embedded OS	
Bus	High-performance serial bus	
Slot	12 slots(1 for main control card, 11 for function card)	
<b>System Configuration</b>		
Mainframe	2 Power supply, main control card, high-performance serial bus backplane, smart temperature controlled fan	
Video Input Card	6 max	
Video Output Card	4 max	
<b>Case</b>		
Mainframe	6U standard 19", 12 slots	
<b>Main Control Interface</b>		
Network	1×RJ45, 10M/100M/1000M	
Serial	4×RS232, for matrix, LCD display, mid-control, 1×RS485, for PTZ	
USB	1×USB2.0	
SD Card	1, support high-speed SD write/read standard	
<b>Video Input(Optional)</b>		
Analog(BNC)	Interface	4ch BNC (1.0VP-P, Impedance75Ω)
	Format	PAL/NTSC self-adaptable
VGA	Interface	DB15
	Format	Support VESA 2.0 standard, video resolution of 1024×768@60Hz, 1280×1024@60Hz, 1400×1050@60Hz, 1600×1200@60Hz, 2048×1536@30Hz and other user-defined resolution
DVI	Interface	DVI-D, support HDMI with converters
	Format	Support DVI 1.0 & HDMI 1.3 standard, support 12-bit HDMI signal, support xvYCC color standard signal, input video resolution supports 1024×768@60Hz, 1280×1024@60Hz, 1400×1050@60Hz, 1600×1200@60Hz, 720p, 1080p and other user-defined resolution
HDMI	Interface	HDMI
	Format	Support DVI 1.0 & HDMI 1.3 standard, support 12-bit HDMI signal, support xvYCC color standard signal, input video resolution supports 1024×768@60Hz, 1280×1024@60Hz, 1400×1050@60Hz, 1600×1200@60Hz, 720p, 1080p and other user-defined resolution
<b>Video Output</b>		
DVI output	Interface	4ch DVI-I
	Format	Max output resolution : 1920×1080@60Hz
<b>Matrix Switching Capability</b>		
Matrix Switch	Video Source	Analog, Digital, IPC, DVR, NVS, NVR, etc.
	Non-compressed HD Video Matrix Switching	24ch input, 16ch switched output
	Non-compressed SD Video Matrix Switching	24ch input, 16ch switched output
<b>Video-wall Merge Control</b>		
Splicing	Function	Splice, Zoom, Overlay, Roam
	Video Source	HD & SD, Digital & Analog in any combination
	Output Interface	DVI-I
	Control Mode	PC client-end, Network keyboard, iPad
<b>Working Environment &amp; other Physical Parameter</b>		
Power Supply	AC Power : 100~120V AC, 200~240V AC	
Power Consumption	≤300W	
Working Temperature	0 C ~ + 50 C	
Working Humidity	10% — 90% 86kpa — 106kpa	
Dimension(mm)	6U standard 19", 482.6(width)×314.5(depth)×266.7(height)	
Weight	≤30Kg (full configuration)	

# DH-M30

## Video Wall Controller



### Features

#### Hardware Structure

- 3U 19" Standard industry box
- Support up to 9 video-wall display units, support configuration of 2x2, 2x3, 2x4, 3x3
- Hot-swappable function cards, easy for maintenance

#### Video Input

- **Local Video:** Support CVBS/VGA/DVI/HDMI/HD-SDI input
- **Network Video:** IPC/DVR/NVR, etc.

#### Video Output

- 9ch@DVI, support split, merge, splice, roam

#### Matrix Switch

- Support control of external D1, VGA & DVI video matrix
- Lossless switching with time delay less than 40ms
- Multiple switch control modes : network keyboard, web client & iPad

#### Network & Control

- Support 10M/100M/1000M for network video decoding & video-wall control
- Support control for matrix, video-wall, dome camera with RS485 & RS232, support mainstream manufacturers' protocol
- Support ONVIF/PSIA/GB28181/DB33/DB41/RTP/RTSP, support mainstream manufacturers' IPC/DVR/NVR such as Honeywell/Tyco/Pelco/Sony/Panasonic/Axis/Dahua/Hikvision/Uniview
- Support user authority management

### Technical Specifications

Model		DH-M30
<b>System</b>		
Main Processor	TI high performance processor, incorporates ARM core, DSP & hardware video processing accelerating unit	
Operating System	Embedded OS	
Bus	High-performance serial bus	
Slot	2 function card slots	
<b>System Configuration</b>		
Mainframe	2 Power supply, main control card, high-performance serial bus backplane, smart temperature controlled fan	
Video Input Card	2 max	
<b>Case</b>		
Mainframe	3U standard 19", 2 slots	
<b>Main Control Interface</b>		
Network	1×RJ45, 10M/100M/1000M	
Serial	3×RS232, for matrix, LCD display, mid-control 2×RS485, for PTZ	
USB	1×USB2.0	
<b>Video Input (Standard Configuration)</b>		
Video	Interface	16@BNC (1.0VP-P, Impedance75Ω)
	Format	PAL/NTSC self-adaptable
VGA	Interface	DVI/VGA
	Format	Max input resolution : 1920×1080@60Hz
Network Video	Interface	RJ45
	Format	1080P/UXGA/720P/960H/D1/2CIF/CIF Support 9@1080P network video decoding at the same time
<b>Video-wall Merge Control</b>		
Splicing	Function	Splice, Zoom, Overlay, Roam, etc.
	Video Source	HD & SD, Digital & Analog in any combination
	Output Interface	9-ch DVI-I
	Control Mode	PC client-end, Network keyboard, iPad
<b>Working Environment &amp; other Physical Parameter</b>		
Power Supply	AC Power :100~120V AC, 200~240V AC	
Power Consumption	≤80W	
Temperature	0℃ ~ +50℃	
Working Humidity	10% ~ 90% 86kpa ~ 106kpa	
Dimension(mm)	3U standard 19", 482.6(width)×496(depth)×133(height)	
Weight	≤10Kg (full configuration)	

# DH-M60

## Video Platform



### Features

- 19" standard 12U
- Easy and flexible configuration with pluggable card module design
- Function card supports hot-swap
- DC/AC Power supply
- 320ch@D1 or 160ch@1080P signal encoding (full configured)
- 1280ch@D1 or 320ch@1080P signal decoding (full configured)
- Support analog/digital video signals input and matrix output
- Support SD/HD video signal matrix switch and output
- Support non-compressed digital signal encoding output
- Support switch via network keyboard, client-end and etc.
- 8 RJ-45 ports and 8 optical ports (can't be used simultaneously) for matrix control, preview and online central storage.
- Support TCP/IP/RTP/RTSP/RTCP/TCP/UDP/DHCP/PPPoE and etc. network protocols
- Support network extended alarm signal input and output
- Remote cast analog/digital video onto the video-wall
- Remote reboot/upgrade/default setting and etc operations
- Support functions as filter, whitelist and etc.

### Technical Specifications

Model	DH-M60	
<b>System</b>		
Main Processor	Matrix Platform Quad-core embedded microprocessor	
Operating System	Embedded LINUX	
Bus	PCI-E	
Slot	11	
Mainframe	2 Power Supply, main control board, PCI-E bus rear panel, smart temperature controlled fan	
Video Input Card	Max. 10	
Video Output Card	Max. 10	
Alarm Card	Optional	
<b>Video Input</b>		
DH-VEC3204FB-M60 (Analog)	Interface	BNC (1.0VP-P, 75Ω)
	Encoding	Single Function Card: 32ch@D1
	Audio	Single Function Card: 32ch, DB26(2.0Vp-p,1KΩ), G.711a
DH-VEC0804HS-M60 (HD-SDI)	Interface	BNC (1.0VP-P, 75Ω)
	Encoding	Single Function Card: 8ch@1080p
	Audio	Single Function Card: 8ch, DB26(2.0Vp-p,1KΩ), G.711a
DH-VEC0804HF-M60 (HD-SDI)	Interface	BNC (1.0VP-P, 75Ω)
	Encoding	Single Function Card: 16ch@1080p
	Audio	Single Function Card: 16ch, DB26(2.0Vp-p,1KΩ), G.711a
DH-VEC0804HD-M60 (DVI-I)	Interface	DVI-I
	Encoding	Single Function Card: 8ch@1080p
	Audio	Single Function Card: 8ch, DB26(2.0Vp-p,1KΩ), G.711a
DH-VEC1604HC-M60 (HDCVI)	Interface	BNC (1.0VP-P, 75Ω)
	Encoding	Single Function Card: 16ch@1080p
	Audio	Single Function Card: 16ch, DB26(2.0Vp-p,1KΩ), G.711a
<b>Video Output</b>		
DH-VDC1204B-M60 (BNC)	Interface	12ch BNC
	Decoding	Single Function Card: 48ch@D1
	Split	1/4
	Audio	12ch, DB15 Line out
DH-VDC0804V-M60 (VGA)	Interface	8ch VGA
	Decoding	Single Function Card: 32ch@1080p/64ch@720p/128ch@D1
	Split	1/4/9/16
	Audio	8ch, DB15 Line out
DH-VDC0804D-M60 (DVI)	Interface	8ch DVI
	Decoding	Single Function Card: 32ch@1080p/64ch@720p/128ch@D1
	Split	1/4/9/16
	Audio	8ch, DB15 Line out
DH-VDC0804H-M60 (HDMI)	Interface	8ch HDMI
	Decoding	Single Function Card: 32ch@1080p/64ch@720p/128ch@D1
	Split	1/4/9/16
	Audio	8ch, DB15 Line out
<b>Matrix Switch</b>		
Video Input	Analog Camera, Digital Camera, IPC, DVR, NVS, NVR and etc.	
IP HD Matrix Switch	320ch@1080p, 640ch@720p, 1280p@D1	
Non-compressed HD Video Switch	For example, 96/32ch in/out (6 16-ch HD-SDI input card & 8 8-ch HD output card)	
Non-compressed SD Video Switch	For example, 256/24ch input/output (8 32-ch CVBS input card & 2 12-ch output card)	
<b>Video-Wall</b>		
Decoding Card Video-Wall Splicing	Splicing	Support video-wall splicing (max 80 LCD display units)
	Video-Wall	Support Splicing Zoom/Merge/Roam/Overlay
	Input Source	HD/SD, Digital/Analog (support mix input)
	Output Port	HDMI/DVI/VGA/BNC
Control Mode	Local Operate Menu / PC client-end / Network Keyboard	
<b>Network</b>		
Interface	8 RJ-45 ports (10/100/1000M) 8 optical ports (The above two sorted ports can't be used simultaneously)	
Network Functions	HTTP, TCP/IP, IPv4/IPv6, UPNP, RTSP, UDP, SMTP, NTP, DHCP, DNS, IP Filter, PPPoE, DDNS, FTP, Alarm Server	
Remote Operation	Monitor, PTZ control, Playback, System setting, File download, Log information	
<b>Auxiliary Interface</b>		
USB Interface	4 ports	
RS232/ RS485	Dahua keyboard, PC communication/ PTZ control	
<b>General</b>		
Power Supply	DC48V, 47-63Hz; AC 100~120V / 200~240V	
Power Consumption	800W	
Working Environment	0°C ~+50°C / 10~90%RH / 86~106kpa	
Dimension(W×D×H)	12U, 482.6mm×496mm×532.6mm	
Weight	≤40Kg	

# Success Cases



National Grid Project in Dili, East Timor Video Wall 3x3



Poland Video Wall 2x2



National Grid project in Equatorial Guinea Video Wall 3x4



India Security Expo Video Wall 3x3



Public Security Bureau in Hubei Province Video Wall 9x10



Public Security Bureau in Jiangsu Province Video Wall 5x9

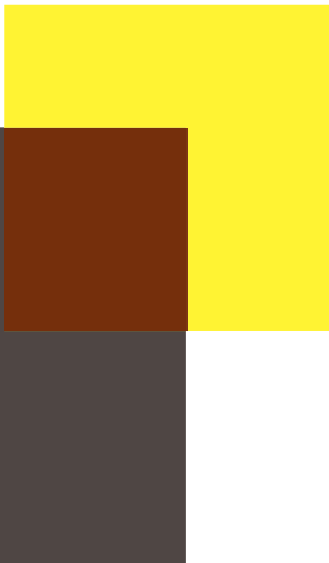


Colliery in Shanxi Province Video Wall 4x10



Hangzhou Subway Public Security Bureau Video Wall 6x8

# DAHUA TECHNOLOGY MAKE YOUR LIFE SAFER



\* Design and specifications are subject to change without notice.

Display & Controller product line-up-01, Jan. 2014



**DAHUA TECHNOLOGY CO., LTD.**  
No.1199 Bin'an Road, Binjiang District, Hangzhou, China. 310053  
Tel: +86-571-87688883 Fax: +86-571-87688815  
Email: [overseas@dahuatech.com](mailto:overseas@dahuatech.com)  
[www.dahuasecurity.com](http://www.dahuasecurity.com)



© Dahua Technology, All rights reserved